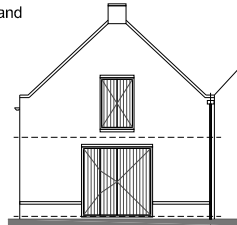
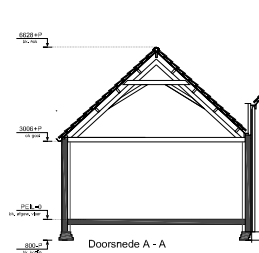


Linker zijgevel

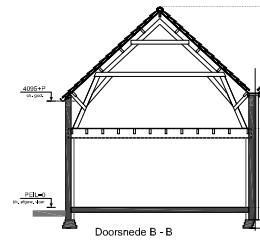
Bestaand



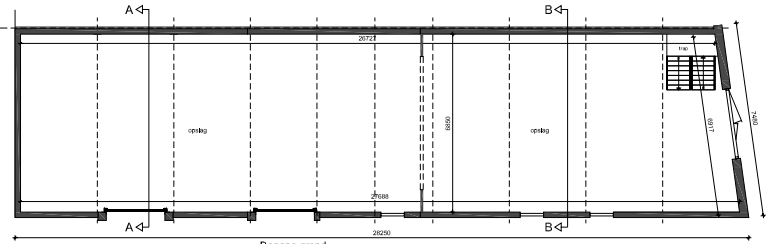
Voorgevel



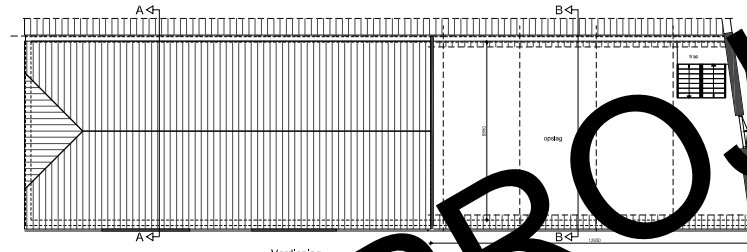
Doorsnede A - A



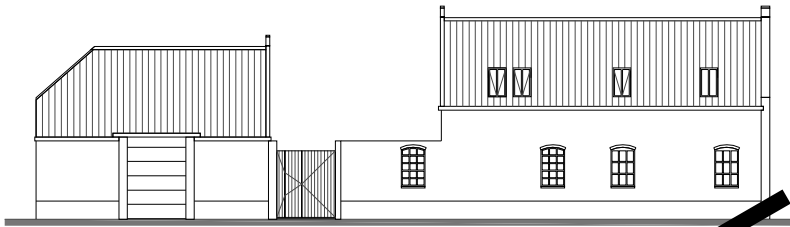
Doorsnede B - B



Begane grond

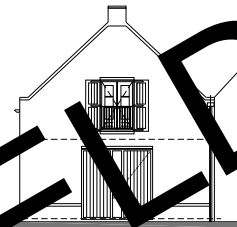


Verdieping



Linker zijgevel

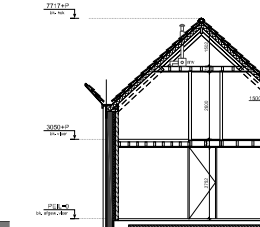
Nieuw



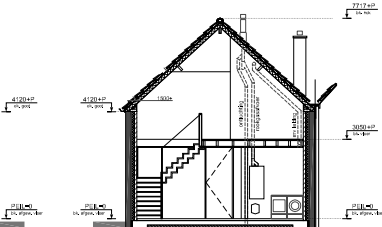
Voorgevel



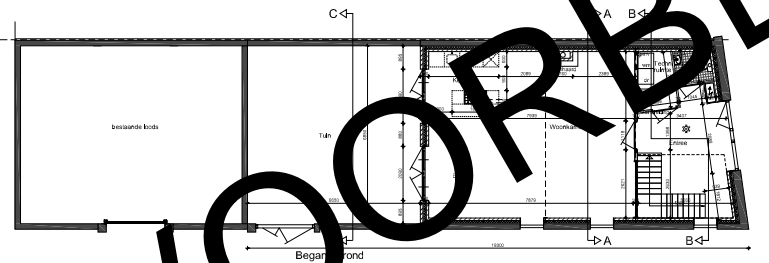
Achtergevel



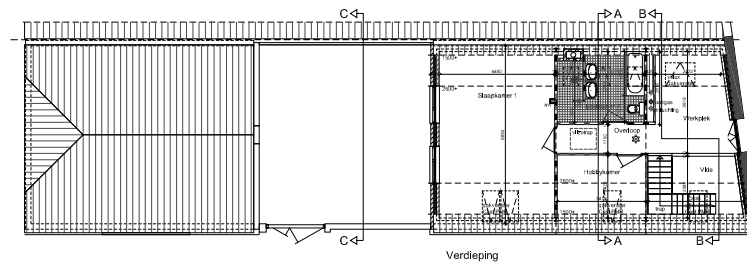
Doorsnede A - A



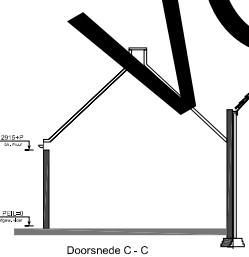
Doorsnede B - B



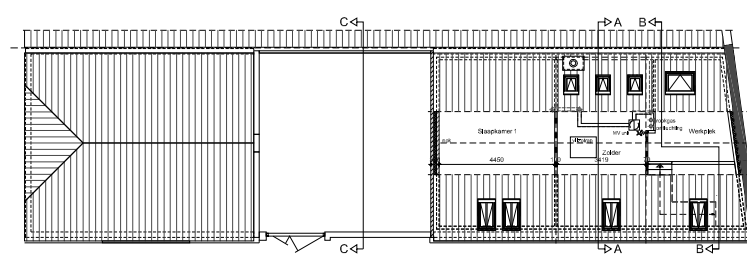
Begane grond



Verdieping



Doorsnede C - C



Zolder

Installaties		Intravestendruk	
1	Verwarming (vloer)	1	Verwarming (vloer)
2	Verwarming (radiatoren)	2	Verwarming (radiatoren)
3	Verwarming (boiler)	3	Verwarming (boiler)
4	Verwarming (boiler)	4	Verwarming (boiler)
5	Verwarming (boiler)	5	Verwarming (boiler)
6	Verwarming (boiler)	6	Verwarming (boiler)
7	Verwarming (boiler)	7	Verwarming (boiler)
8	Verwarming (boiler)	8	Verwarming (boiler)
9	Verwarming (boiler)	9	Verwarming (boiler)
10	Verwarming (boiler)	10	Verwarming (boiler)
11	Verwarming (boiler)	11	Verwarming (boiler)
12	Verwarming (boiler)	12	Verwarming (boiler)
13	Verwarming (boiler)	13	Verwarming (boiler)
14	Verwarming (boiler)	14	Verwarming (boiler)
15	Verwarming (boiler)	15	Verwarming (boiler)
16	Verwarming (boiler)	16	Verwarming (boiler)
17	Verwarming (boiler)	17	Verwarming (boiler)
18	Verwarming (boiler)	18	Verwarming (boiler)
19	Verwarming (boiler)	19	Verwarming (boiler)
20	Verwarming (boiler)	20	Verwarming (boiler)
21	Verwarming (boiler)	21	Verwarming (boiler)
22	Verwarming (boiler)	22	Verwarming (boiler)
23	Verwarming (boiler)	23	Verwarming (boiler)
24	Verwarming (boiler)	24	Verwarming (boiler)
25	Verwarming (boiler)	25	Verwarming (boiler)
26	Verwarming (boiler)	26	Verwarming (boiler)
27	Verwarming (boiler)	27	Verwarming (boiler)
28	Verwarming (boiler)	28	Verwarming (boiler)
29	Verwarming (boiler)	29	Verwarming (boiler)
30	Verwarming (boiler)	30	Verwarming (boiler)
31	Verwarming (boiler)	31	Verwarming (boiler)
32	Verwarming (boiler)	32	Verwarming (boiler)
33	Verwarming (boiler)	33	Verwarming (boiler)
34	Verwarming (boiler)	34	Verwarming (boiler)
35	Verwarming (boiler)	35	Verwarming (boiler)
36	Verwarming (boiler)	36	Verwarming (boiler)
37	Verwarming (boiler)	37	Verwarming (boiler)
38	Verwarming (boiler)	38	Verwarming (boiler)
39	Verwarming (boiler)	39	Verwarming (boiler)
40	Verwarming (boiler)	40	Verwarming (boiler)
41	Verwarming (boiler)	41	Verwarming (boiler)
42	Verwarming (boiler)	42	Verwarming (boiler)
43	Verwarming (boiler)	43	Verwarming (boiler)
44	Verwarming (boiler)	44	Verwarming (boiler)
45	Verwarming (boiler)	45	Verwarming (boiler)
46	Verwarming (boiler)	46	Verwarming (boiler)
47	Verwarming (boiler)	47	Verwarming (boiler)
48	Verwarming (boiler)	48	Verwarming (boiler)
49	Verwarming (boiler)	49	Verwarming (boiler)
50	Verwarming (boiler)	50	Verwarming (boiler)
51	Verwarming (boiler)	51	Verwarming (boiler)
52	Verwarming (boiler)	52	Verwarming (boiler)
53	Verwarming (boiler)	53	Verwarming (boiler)
54	Verwarming (boiler)	54	Verwarming (boiler)
55	Verwarming (boiler)	55	Verwarming (boiler)
56	Verwarming (boiler)	56	Verwarming (boiler)
57	Verwarming (boiler)	57	Verwarming (boiler)
58	Verwarming (boiler)	58	Verwarming (boiler)
59	Verwarming (boiler)	59	Verwarming (boiler)
60	Verwarming (boiler)	60	Verwarming (boiler)
61	Verwarming (boiler)	61	Verwarming (boiler)
62	Verwarming (boiler)	62	Verwarming (boiler)
63	Verwarming (boiler)	63	Verwarming (boiler)
64	Verwarming (boiler)	64	Verwarming (boiler)
65	Verwarming (boiler)	65	Verwarming (boiler)
66	Verwarming (boiler)	66	Verwarming (boiler)
67	Verwarming (boiler)	67	Verwarming (boiler)
68	Verwarming (boiler)	68	Verwarming (boiler)
69	Verwarming (boiler)	69	Verwarming (boiler)
70	Verwarming (boiler)	70	Verwarming (boiler)
71	Verwarming (boiler)	71	Verwarming (boiler)
72	Verwarming (boiler)	72	Verwarming (boiler)
73	Verwarming (boiler)	73	Verwarming (boiler)
74	Verwarming (boiler)	74	Verwarming (boiler)
75	Verwarming (boiler)	75	Verwarming (boiler)
76	Verwarming (boiler)	76	Verwarming (boiler)
77	Verwarming (boiler)	77	Verwarming (boiler)
78	Verwarming (boiler)	78	Verwarming (boiler)
79	Verwarming (boiler)	79	Verwarming (boiler)
80	Verwarming (boiler)	80	Verwarming (boiler)
81	Verwarming (boiler)	81	Verwarming (boiler)
82	Verwarming (boiler)	82	Verwarming (boiler)
83	Verwarming (boiler)	83	Verwarming (boiler)
84	Verwarming (boiler)	84	Verwarming (boiler)
85	Verwarming (boiler)	85	Verwarming (boiler)
86	Verwarming (boiler)	86	Verwarming (boiler)
87	Verwarming (boiler)	87	Verwarming (boiler)
88	Verwarming (boiler)	88	Verwarming (boiler)
89	Verwarming (boiler)	89	Verwarming (boiler)
90	Verwarming (boiler)	90	Verwarming (boiler)
91	Verwarming (boiler)	91	Verwarming (boiler)
92	Verwarming (boiler)	92	Verwarming (boiler)
93	Verwarming (boiler)	93	Verwarming (boiler)
94	Verwarming (boiler)	94	Verwarming (boiler)
95	Verwarming (boiler)	95	Verwarming (boiler)
96	Verwarming (boiler)	96	Verwarming (boiler)
97	Verwarming (boiler)	97	Verwarming (boiler)
98	Verwarming (boiler)	98	Verwarming (boiler)
99	Verwarming (boiler)	99	Verwarming (boiler)
100	Verwarming (boiler)	100	Verwarming (boiler)

Opmerkingen: Bestaande houten spanten en liggers van het huidige pandhuis worden in de nieuwe woning verwerkt.

